



Go Good Guru
Everything Wellness, Fitness and Fun!

PORTION CONTROL GUIDE

FORGET CALORIE COUNTING. TRY THIS METHOD INSTEAD.

Most people think controlling portions means counting calories, but we think there's a better way. Try our (much easier) Hand Measure system instead.

YOUR HAND IS ALL YOU NEED

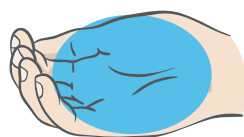
Your hand is proportionate to your body, its size never changes, and it's always with you, making it the perfect tool for measuring food and nutrients - minimal counting required.



A serving of protein
= 1 palm



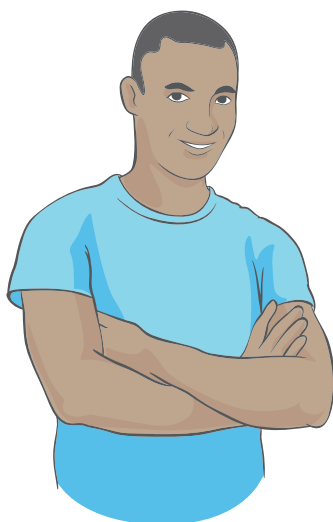
A serving of
vegetables = 1 fist



A serving of carbs =
1 cupped hand

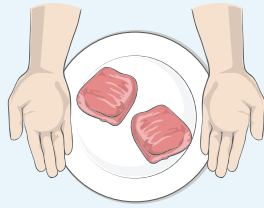


A serving of
fats = 1 thumb



HERE'S HOW TO USE THIS METHOD TO BUILD A PLATE



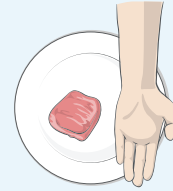


Men:
Two palm-sized portions
(~ 40-60 g protein)

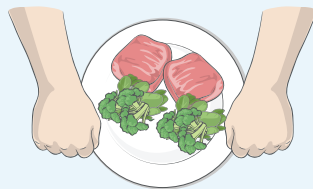
STEP 1

PROTEIN

Meat, fish, eggs,
cottage cheese,
and Greek yogurt



Women:
One palm-sized portion
(~ 20-30 g protein)

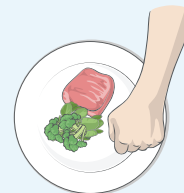


Men:
Two fist-sized portions

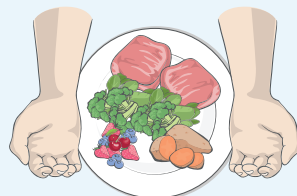
STEP 2

VEGETABLES

Broccoli, spinach,
salad, carrots, etc.



Women:
One fist-sized portion

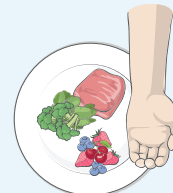


Men:
Two cupped-hand sized portions
(~ 40-60 g carbs)

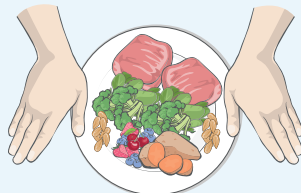
STEP 3

CARBOHYDRATES

Grains, starches,
beans, and fruits



Women:
One cupped-hand sized portion
(~ 20-30 g carbs)

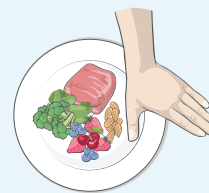


Men:
Two thumb-sized portions
(~ 15-25 g fat)

STEP 4

FATS

Oils, butters,
nut butters, nuts,
and seeds



Women:
One thumb-sized portion
(~ 7-12 g fat)

Men eating 3-4 meals as outlined would get around 2,300 - 3,000 calories each day. Women eating 3-4 meals as outlined would get around 1,200 - 1,500 calories each day.

NOW, CUSTOMIZE THE PLAN FOR YOU

Active men do best with 6-8 servings of each food group per day (~2,300-3,000 kcal). Active women do best with 4-6 servings of each food group per day (~1,500 - 2,100 kcal).

From there, adjust the number of portions to meet your personal needs and goals.

IF YOU NEED MORE FOOD BECAUSE YOU...

- Are larger in stature
- Aren't feeling satisfied at meals
- Eat less frequently throughout the day
- Are very active
- Are trying to gain muscle
- Aren't getting muscle-gain results

IF YOU NEED LESS FOOD BECAUSE YOU...

- Are smaller in stature
- Are feeling too full at meals
- Eat more frequently throughout the day
- Are not very active
- Are trying to lose weight
- Aren't getting weight-loss results

...THEN START BY ADDING...

Men: 1 cupped handful of carbs and/or 1 thumb of fat to a few meals each day.

Women: 1/2 cupped handful of carbs and/or 1/2 thumb of fat to a few meals each day.

...THEN START BY REMOVING...

Men: 1 cupped handful of carbs and/or 1 thumb of fat from a few meals each day.

Women: 1/2 cupped handful of carbs and/or 1/2 thumb of fat from a few meals each day.

This system is easier than counting calories and nearly as accurate. Just like with counting, though, pay attention to results and adjust as needed.

Want to learn more?

If you'd like to learn more about finding a better way of eating, check out our [Nutrition & Lifestyle Support Program](#) powered by PN ProCoach.

Our ProCoach program gives you the knowledge, systems, and tools you need to build a sustainable nutrition and healthy lifestyle.

Developed over 10 years, and proven with more than 100,000 clients, The PN ProCoach curriculum stands alone as the authority on the science of nutrition and the art of coaching.

Whether you're already mid-journey, or just starting out, our program is your springboard to a deeper understanding of nutrition, the authority to coach it, and the ability to turn what you know into results.

Visit this link for more information:

<http://www.gogoodguru.com/online-coaching>